



projectsolve²

ProjectSolve² – Project Collaboration Tool

Product Name

ProjectSolve²

Client

Hundreds

Timescale

2002 – Present

Elements

Internet-based data collaboration

Project Team

WSP Project Information Management Group

Product Type

Data Management

Overview

ProjectSolve² is a secure Internet-based collaboration tool that allows project teams of all sizes to easily communicate and share information regardless of their location or proximity to the project site. Tailored for the AEC industry, ProjectSolve² adapts to unique business processes and facilitates the synthesis of the various information systems often found among project partners.

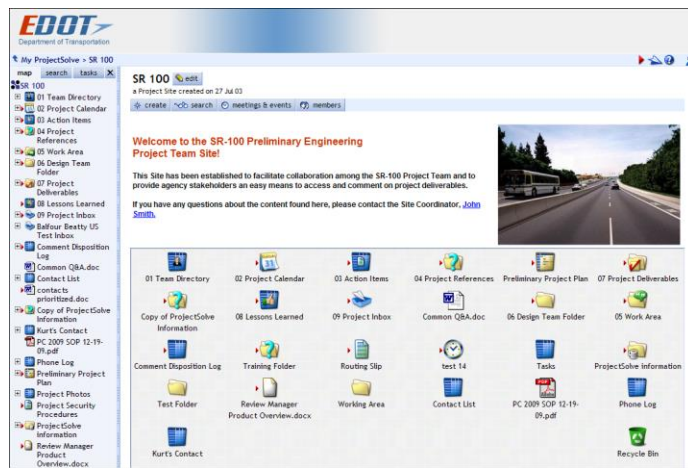
Whether working with a complex program or a simple project, managing communications and the flow of information among team members remains one of the greatest challenges to a project's success. Today, deploying a secure, web-based work space where people can collaborate and share project information is a proven, simple, economical way to address these challenges.

WSP pioneered web-based project collaboration in the late 20th century, and today our considerable experience is found in ProjectSolve. Suitable for projects of every size, and agile enough to meet the evolving needs of any infrastructure project — from planning and design to construction and maintenance — Built upon EMC Documentum's eRoom collaboration platform, ProjectSolve² is an easy to use yet extremely powerful collaboration tool.

Benefits

ProjectSolve² provides project teams with numerous significant benefits including:

- Facilitates team coordination and cohesion, accelerating project start-up.
- Streamlines business processes that cross organizational boundaries.
- Captures valuable knowledge in a manner that enables future re-use.
- Eases scheduling and event management with logically-crafted calendars and online meeting tools.
- Enhances control and efficiency of quality processes.
- Allows for centralized management and access of project information.



ProjectSolve² Landing Page












Gold Hosting
Gold Intelligent Systems

Integrated Solutions TEC | Project Information Management Group
5613 DTC Parkway, Suite 500, Greenwood Village, CO 80111
866.390.5970 | info@pbid.com



Built in Tools

ProjectSolve² comes with a set of built-in tools designed to provide users with the additional functionality they need in order to successfully perform their jobs. These tools include:

-  Calendar – A simple team calendar for scheduling meetings and posting event-related files
-  Folder – A container in which users can store files and other items on a ProjectSolve site
-  Database – A configurable data management tool for managing structured information such as team directories, utility conflicts, design comments or action items.
-  Discussion – A multi-person dialog where members can read others' comments and contribute their own to the message thread.
-  Inbox – A special folder type that can receive and store email messages.
-  Project Plan – A simple project schedule with a Gantt chart interface.
-  Poll – A page for taking a vote where you pose questions and supply the possible responses.
-  Link – A hypertext shortcut to a web site, a file or a user's email address.
-  Note – A basic text editor.

Summation

Out of the box, ProjectSolve² offers tools and solutions to meet most of the communication and information management requirements seen on today's projects.

Contact Us

For more information about ProjectSolve², or any of the products we offer, please feel free to contact us.

T 866-390-5970

E info@pbid.com